

# Quadrangle Maps

*What is a 7.5 minute series map?*

# Quadrangle Maps

- Quadrangle - standard maps covering systematically subdivided areas of latitude and longitude
  - Published at various scales depending on the size of the area mapped
  - The best known USGS maps are the 7.5-minute series

# Quadrangle Maps

- Standard Quadrangle Map
  - 7.5 x 7.5 minutes
  - Covers an area of 49 to 71 square miles
  - Map scales are 1:24,000 (one inch on the map equals 24,000 inches on the ground)

# Quadrangle Maps

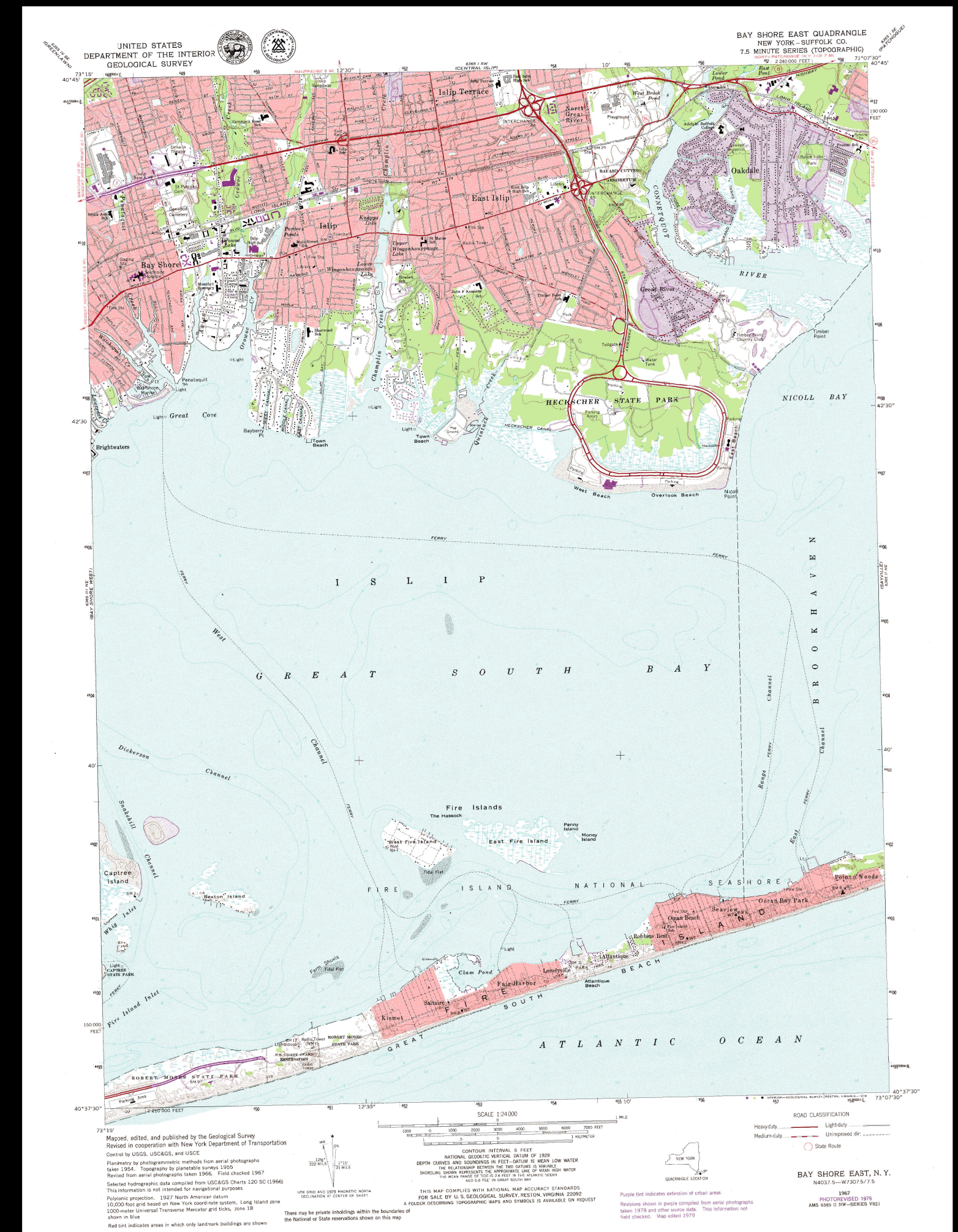
- Standard Quadrangle Map (continued)
  - Paper size (approx.) 22" X 27"
  - Contours and elevations are shown in feet

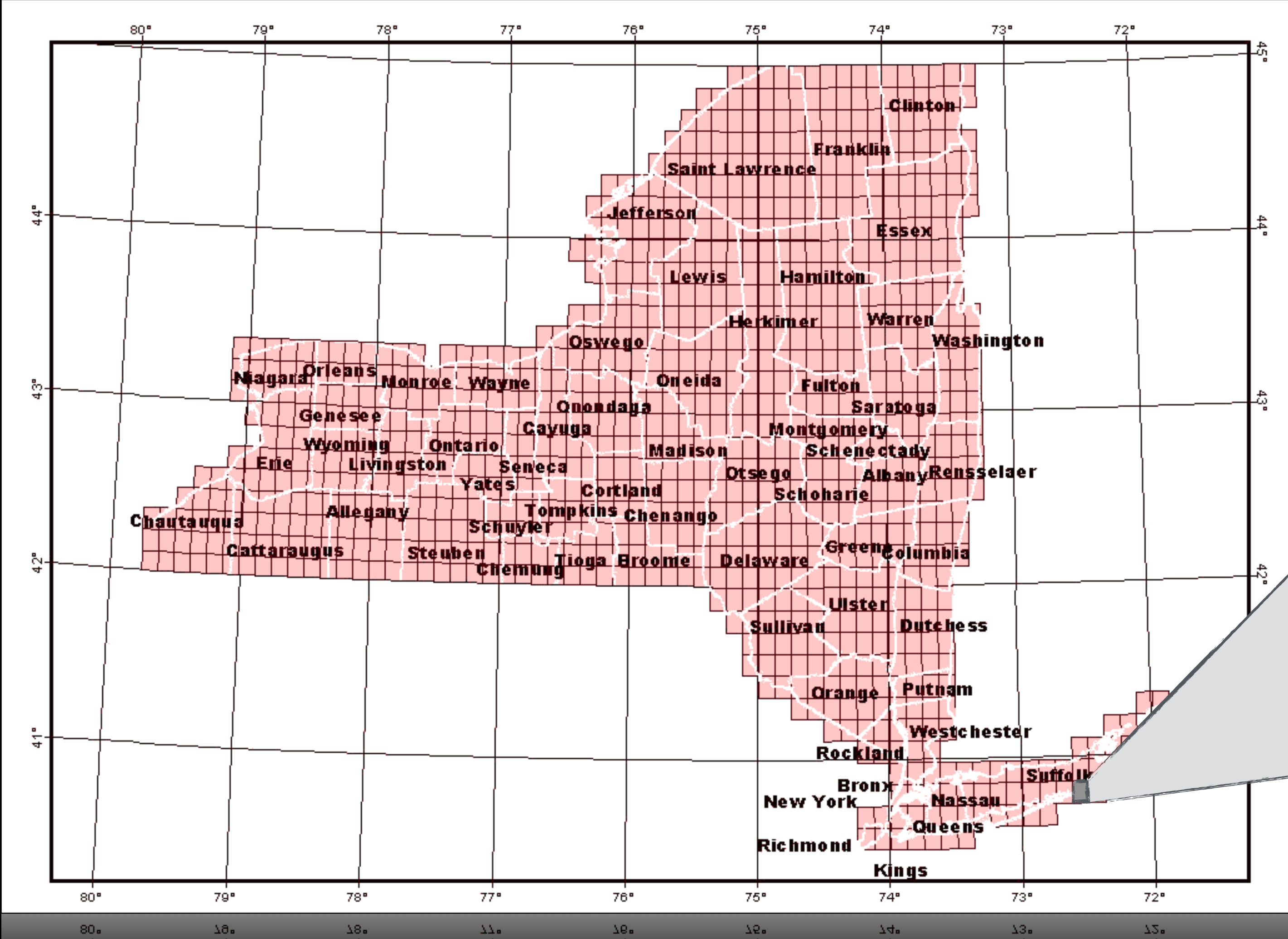
# Quadrangle Maps

- 1° x 2° Quadrangle Map
  - Covers an area of 4580 to 8669 square miles
  - Map scales are 1:250,000 (one inch on the map represents 4 miles on the ground)

# Quadrangle Maps

- The USGS completed mapping of the entire country at a 1:24,000 scale in the late 1980's
  - *We are going to look at a map called the Bay Shore East Quadrangle*





New York State Quadrangle Maps



Death Valley, CA